

Hot Press News

November 2013 • P.O. Box 984 Rehoboth Beach, DE 19971 • www.delawarewatercolorsociety.org

Second Tuesday

In October, we had another full house for our mini-session on trees. **Anne Crown-Cyr** and **Donald Blow** gave us several tips on what to consider when painting trees. They covered both wet-in-wet and dry brush techniques.

Here are some takeaways from the day: think about shape; paint the color of light on the object (tree), not the color of the object; think about the direction of light, and whether your painting is predominantly warm or cool. If you use a round brush, try a flat one; a small one, try a large one. Sit in your yard and see the color of light on trees and how it varies depending on the time of day. If you must work from a photograph, use it as a reference only. Develop a composition or value study first, then try to focus on the elements of composition without copying the photo.

SECOND TUESDAYS

November 12, 2013

December 10, 2013

10 a.m. to Noon

The Glade Clubhouse, 16 Glade Farm Drive
Rehoboth Beach, DE 19971

Light refreshments and door prizes

Coming Up on November 12

Do you know where you stand as an artist? Are you a hobbieist, a beginner, an emerging artist, or a professional?



Lynn Brittingham (left) and Diane Shearon develop their wet-in-wet paintings.

In November, we'll explore the criteria for your level of expertise and what you need to know and do to pursue a professional course. We will revisit the requirements and criteria needed to be considered an Artist member, signature level, to help prepare those who wish to apply for this honor.

Join us at the Glade Clubhouse, 16 Glade Farm Drive, Rehoboth, DE 19971, from 10 a.m. to noon. Door prizes and refreshments. Free to members; \$10 for guests.

For more information, contact Isabel at 302-684-1457.

Member News

Juror Richard Ressel, NWS, selected **Nancy Brown's** painting, *Café Break*, into the Keystone National 2013 Juried Works on Paper Exhibition, held at the Art Center in Mechanicsburg, PA, in September-October.

Congratulations!



Café Break by Nancy Brown

◆ **Doris Davis-Glackin** received the Chandler Bellows Memorial Award for her painting, *Ode to Summer's End*, in the Philadelphia Watercolor Society's 113th Anniversary International Exhibition of works on paper held from September 11 to October 15 at West Chester University. She also received PWCS Crest Medal to recognize those members who have shown consistent excellence in works entered in their annual exhibitions.

◆ **Donna Sheppard** has volunteered to serve as our new hospitality chair. The Board also recognizes and appreciates the effort **Ruth Ann Kauffman** put forth as the former chair. Thank you ladies for your help.



Ode to Summer's End by Doris Davis-Glackin

Mark Your Calendar

Upcoming Events

Our annual meeting and luncheon will be on December 10th from 10 a.m. to 1 p.m. at the Glade clubhouse. We also will have our Christmas small works gift exchange. Please provide a gift-wrapped, framed watercolor, no larger than 5x7 inches. Join the fun and connect with artist members.

At this meeting, we will elect our officers for the Board of Directors. The positions available include Secretary, Treasurer/Membership Director, Workshop Director, Communications Director, and Exhibitions Chair. Please take advantage of this opportunity to keep DWS moving forward and sign up for one of these vacancies. If interested, please email delawarewatercolorsociety@gmail.com, Attn: Vacancies. Position descriptions will be available at our website sometime in November.

Website

You can now access our member list online. You must use the ID and password specified in a recent email by DWS President, Elizabeth Collard. If you do not have email, and want to be included on the list, you will have to provide your phone number in lieu of email. If you wish to do this, please contact Elizabeth Collard at (302) 645-4821.

In using the member list, please maintain the privacy of all DWS members by not sharing the password with anyone or any organization outside of DWS.

In the Spotlight

Jan Henning calls Laceyville, PA, home and has been a member of DWS since 2007. She appreciates the enthusiasm of DWS members about their art and enjoys the Second Tuesdays sessions.

A retired elementary school art teacher, who after teaching for more than 32 years, continues to hold adult and children's art classes and workshops. Primarily a watercolorist, she also works in pastels and acrylics and enjoys both plein air and studio painting. She paints in plein air every Monday with a group in Pennsylvania, rain or shine.



Where Are the Girls? by Jan Henning

Henning enjoys traveling and painting in Ontario, Nova Scotia, and across the Eastern United States. Today, she pursues her art in her PA studio as well as a small studio near Milton, DE, but often visits the

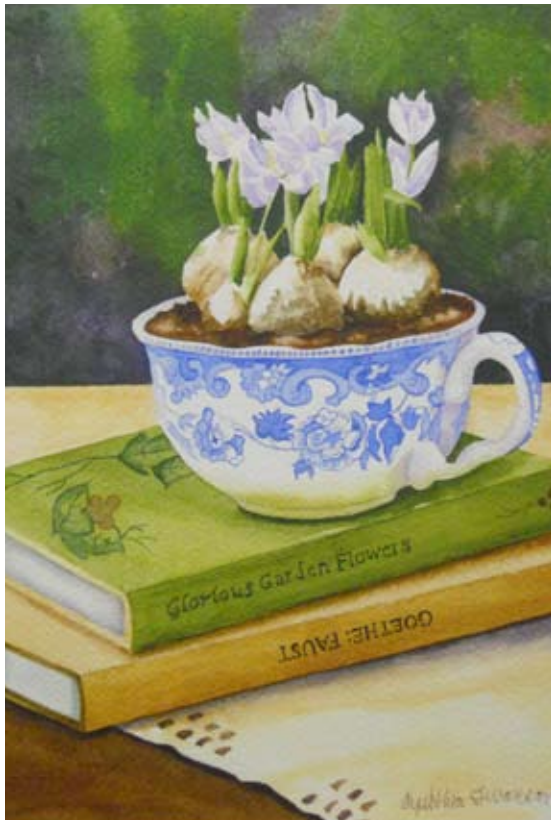
Charleston, SC, area to take advantage of the many plein air painting opportunities there. In fact, one of her favorite works is a newly completed large, three-panel painting of a 1,000 year old live oak, *Angel Oak*, near Charleston.

Henning has a BS in Art Education from SUNY New Paltz and completed post-graduate studies at Marywood University, Scranton, PA; Kutztown University, Kutztown, PA; Penn State University, Worthington Campus, Scranton, PA; Wilkes University, Wilkes Barre, PA; and NEIU #18, Kingston, PA. Henning also did an Architectural Residency for Teachers at Frank Lloyd Wright's Fallingwater in Mill Run, PA. She received the *Educator of the Year* award from the Graduate Department of Marywood University.

In addition to her many accomplishments, Henning feels that her most memorable achievement in watercolor was her 2012 Pennsylvania Watercolor Society Award for her juried entry, *Where Are the Girls?*



Angel Oak by Jan Henning



Up in a Cup by Cynthia Swanson -- Last Month's Featured Artist

Tip of the Month - Mixing Darks

Tips for a Strong Composition

1. Use the Rule of Thirds to plan your composition.

2. Place the focal point on one of the intersection points of one of the thirds.

3. Check the other elements in your painting and how they lead the eye towards this point.

4. Consider perspective, or point of view. Are you looking down, up, straight on? Remember aerial perspective too.

5. Do not draw objects. Instead, follow the contour line that weaves throughout the painting to get a stronger composition.



Rule of Thirds example. *A Lean Diet* by Chardin
[Source: <http://willkempartschool.com>]

To be **In the Spotlight**, please go to the DWS website www.delawarewatersociety.org under About Us, then Newsletter, and click on the link for our online "Spotlight" form. Here's the link for your use—

http://www.delawarewatersociety.org/pdf/in_the_spotlight_form_4.pdf

You can complete the form online, include attachments, and email to Editor at

delawarewatersociety@gmail.com.

We'd like to hear from you. We believe this is one way for members to get to know each other. You don't have to be a new member to be highlighted.

6. Do a thumbnail value study of your composition in: white (light), black (dark), and grey (mid-tone). For a strong composition, you want values to vary. Try two thirds, one third, and a little bit—i.e., two thirds dark value, one third light, and a small area or object that's mid-tone.

7. Use an odd number of elements with varying space between them to create interest and keep the eye moving. Keep elements apart or overlapped, not touching. Touching elements create a weak composition and distract the eye.

8. Decide whether warm or cool colors dominate your work. It's your choice, but it can't be both.

9. Make sure that the elements in your composition belong together, creating overall unity.

10. Vary your compositions—change the horizon line, placement of the focal point, horizontal versus vertical format and so on.

11. Make sure your composition has unity, balance, movement, rhythm, and contrast.

[Source: About.com Painting]

Please submit any news item(s) you have before the 10th of each month to Newsletter Editor at delawarewatersociety@gmail.com

Please include all information pertaining to your submission: who, what, why, when, how and any contact numbers.

If you have questions or need assistance regarding DWS issues or events, please contact one of our Executive Board members:

Elizabeth Collard, President (302) 645-4821
Isabel Pizzolato, Vice President (302) 684-1457
Lynn Brittingham, Treasurer (302) 684-1861
Diann Corsnitz, Secretary (302) 827-2193
Rita Poore, Exhibitions Director (703) 217-2905
Anne Crown-Cyr, Communications Director
(302) 226-7781